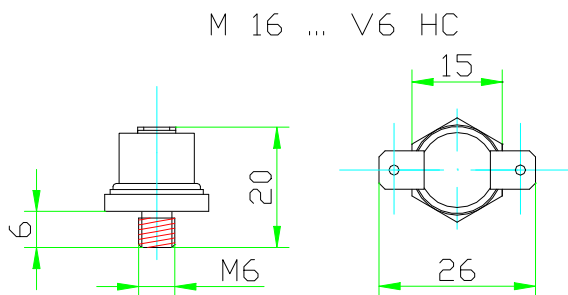
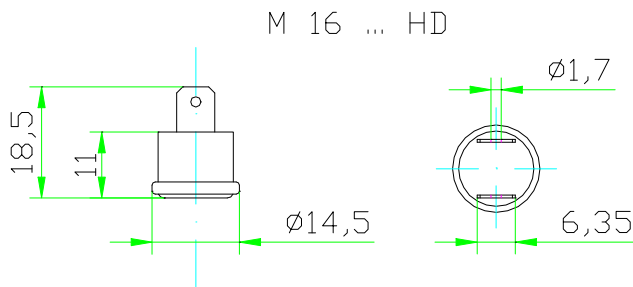


Precision Thermostats M16x



Vigitherme are small thermostats with fixed adjustment.

- They provide a safeguard against any exaggerated heating and regulate temperatures to within a few degrees.

Advantages : the Vigitherme is practically insensitive to shocks, accelerations or vibrations.

It is a quick acting thermostat which can never get out of order.

In the Vigitherme, the thermostatic element consists of a bi-metallic disc in the shape of a spherical cap which has the property of suddenly flipping over at a fixed temperature. The action of the apparatus at this temperature, which is determined during manufacture, remains invariable.

On all the models of Vigitherme, contact can be opening or closing.

- Contact is opening when the circuit opens by temperature increase.

- Contact is closing when the circuit opens by temperature increase.

The Vigitherme is an extremely reliable instrument :

- placed in identical conditions, it will always function at the same temperature, to within a few tenths of a degree.

But because of its operating principle, it has an hysteresis.

- after activation, the temperature must drop by several degrees in order for the apparatus to return to its initial state.

The difference between activation temperature and restoration temperature can vary from four or five degrees to several dozen degrees.

The Vigitherme is manufactured and sold according to temperature range, but it is individually controlled thermally as well as electrically.



Manfred K. Mueller Eng.
Temperature Control
Mannheimer Strasse 12
75179 Pforzheim
Germany
www.thermostat-muller.biz

Phone: + 49 - 7231 1583- 0
Sales: + 49 - 7231 1583-12
Techn. ass.: + 49 - 7231 1583-11
Fax: + 49 - 7231 1583-20
Mobile: + 49 - 174 247 3690
e-mail: info@thermostat-muller.biz

Bank: Sparkasse Pforzheim-Calw
BLZ: 666 500 85 Kto-Nr: 745 965
IBAN DE90 6665 0085 0000 7659 45
BIC (SWIFT-CODE) PZHSDE66
Registered HRA Mannheim 503251
VAT-ID-No.: DE 144 137 729

M16



SPECIFICATIONS

- Temperature range : -40° to +180 °C
- Current rating : 6 A
- Voltage rating : 250 V
- Types of contacts : O=NC or F=NO
- Composition of contacts : solid silver
- Voltage proof between terminations and ground : 4000 V
- Contact resistance : 10 m Ohm
- Connection : terminal for 2.8 mm clips, also can be soldered

Manual reset:

MODEL M 16 BO



SPECIFICATIONS :

- Temperature range : +30° to + 180 °C
- Current rating : 10 A
- Voltage rating : 250 V
- Types of contacts : O
- Composition of contacts : solid silver
- Voltage proof between terminations and ground : 4000 V
- Contact resistance : 10 m Ohm
- Connection : terminal for 2.8 mm clips, also can be soldered

- Max.operating Temp. : + 200 °C
SOCKETS for clips of 6,35 mm



HD

The Vigitherme M 16 can be equipped, in option, of sockets able to receive clips of 6,35 mm. So it is necessary to add at the reference:

- HD for the right sockets (vertical)
- HC for the sockets kneed (horizontal)



V6

V6 THREADED BASE

Any Vigitherme M 16 can be mounted on to a V6 threaded base, consisting of a hexagonal support 15 mm in diameter in stainless steel or brass with a threaded end - 6 mm in diameter and 6 mm in standard length.

any other different dimension of the threaded end can be used on request.



V34

V 34 SUPPORT

- Stainless steel small plate which allows the Vigitherme to be attached on to a flat surface by mean of two screws.



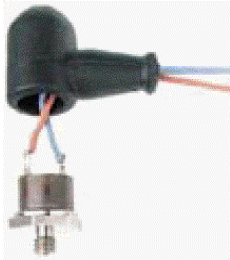


V38

V38

V38 Support

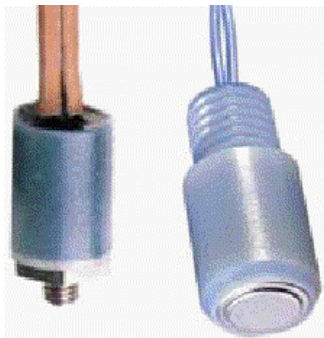
for electrical insulation and high temperature available



P12

P 11 AND P 12 PROTECTIVE HOODS (model M 16)

Rubber polychloroprene hoods which protect and insulate the terminals of the Vigitherme M 16.
The orifice through which the cable pass has a bore of 6,7 mm on the P 11 model and 4 mm on the P 12.

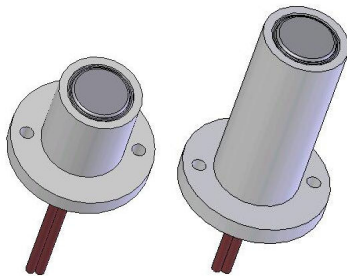


V6 A1

A2

A 1 & A 2 MOULDING

To ensure both perfect insulation and absolute tightness, the Vigitherme can be cased in a epoxies resin.
The standard A 1 moulding is a cylinder and its dimension are the following :
For the M 16 : Diameter 17 mm - high 23 mm
The epoxies resin moulding A 2 is destined to be immersed in the fluids. A diameter threading of 14 mm allows to fix the device through a wall.



A3

A3 MOULDING

A synthetic material flange in short and long execution available with 2 holes to the fastening.
(suitable till max. 140 degrees Celsius)



C

C MOUNTING ON PIPE

To insulate the Vigitherme and ensure its fixate on a pipe, it can be mounted on a brass support the bottom of which is curved to fit the diameter of the conduit .

